



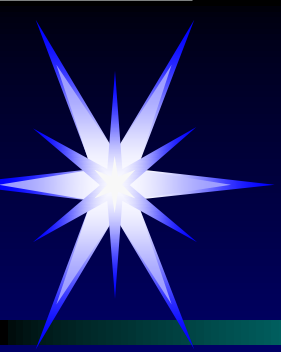
# U.S. Trends in Refractive Surgery: 2010 ISRS Survey - Partner of AAO -

Richard J. Duffey, MD

David Leaming, MD

Refractive Subspecialty Day

Chicago October, 2010



The authors have no financial interests in this survey study.

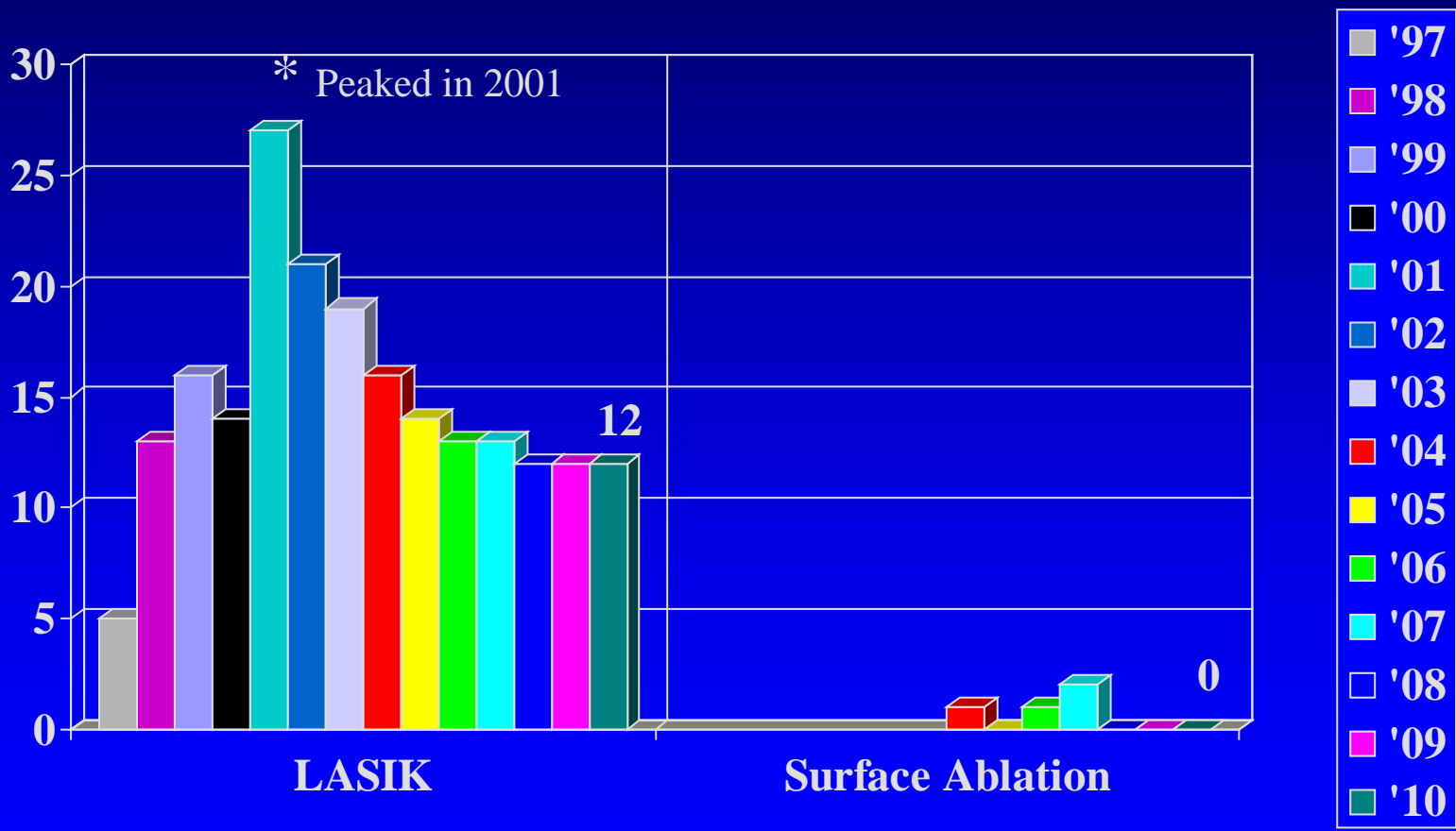


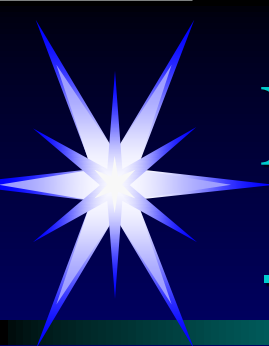
# 2010 Survey

- Second year of ONLINE\*\*\* survey opened by 561 ISRS members of the 1165 total emailed
- 112 responses analyzed by October 1, 2010 for 20% of the U.S. ISRS membership who opened the survey.
- Fourteenth year of refractive data collection.
- Alphabet soup of refractive surgery including corneal and lens-based surgeries.

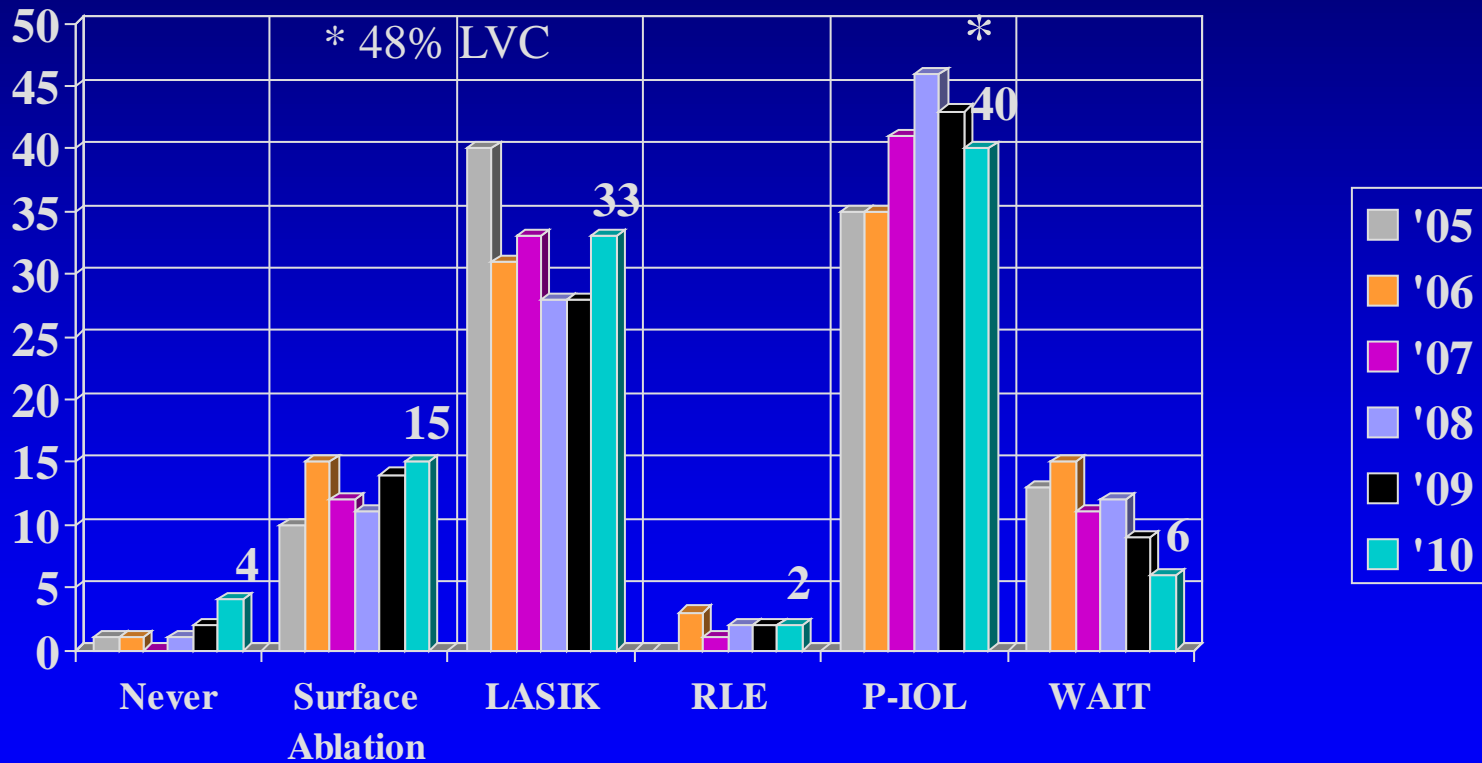


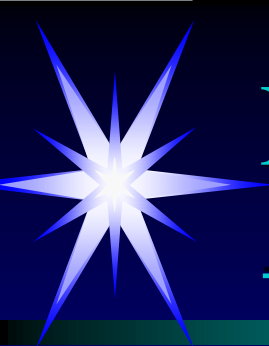
> 75 Cases / Month



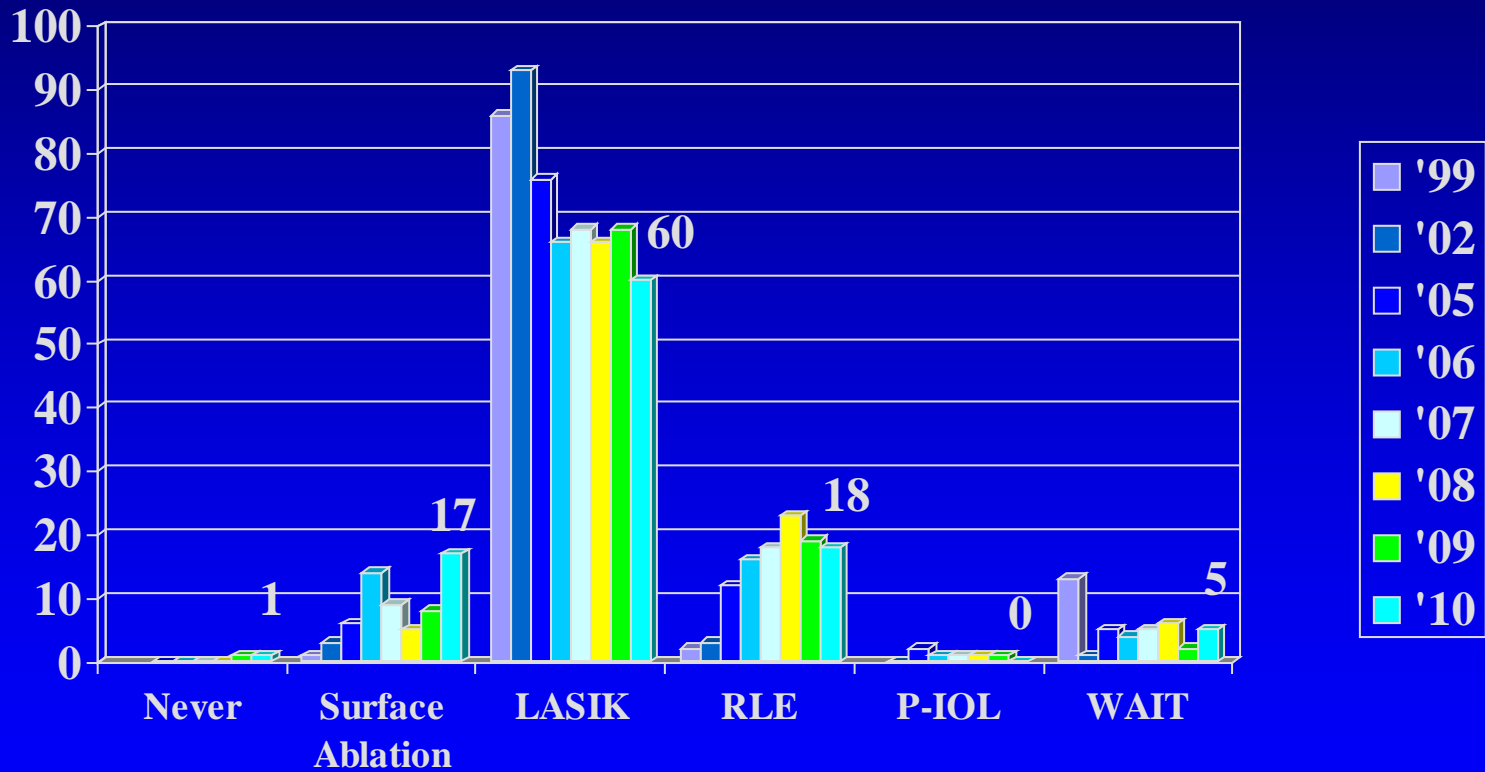


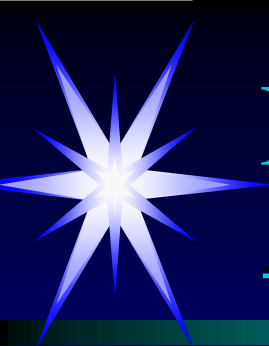
# Preferred Surgery For 30 yo -10.00 Diopter Myope



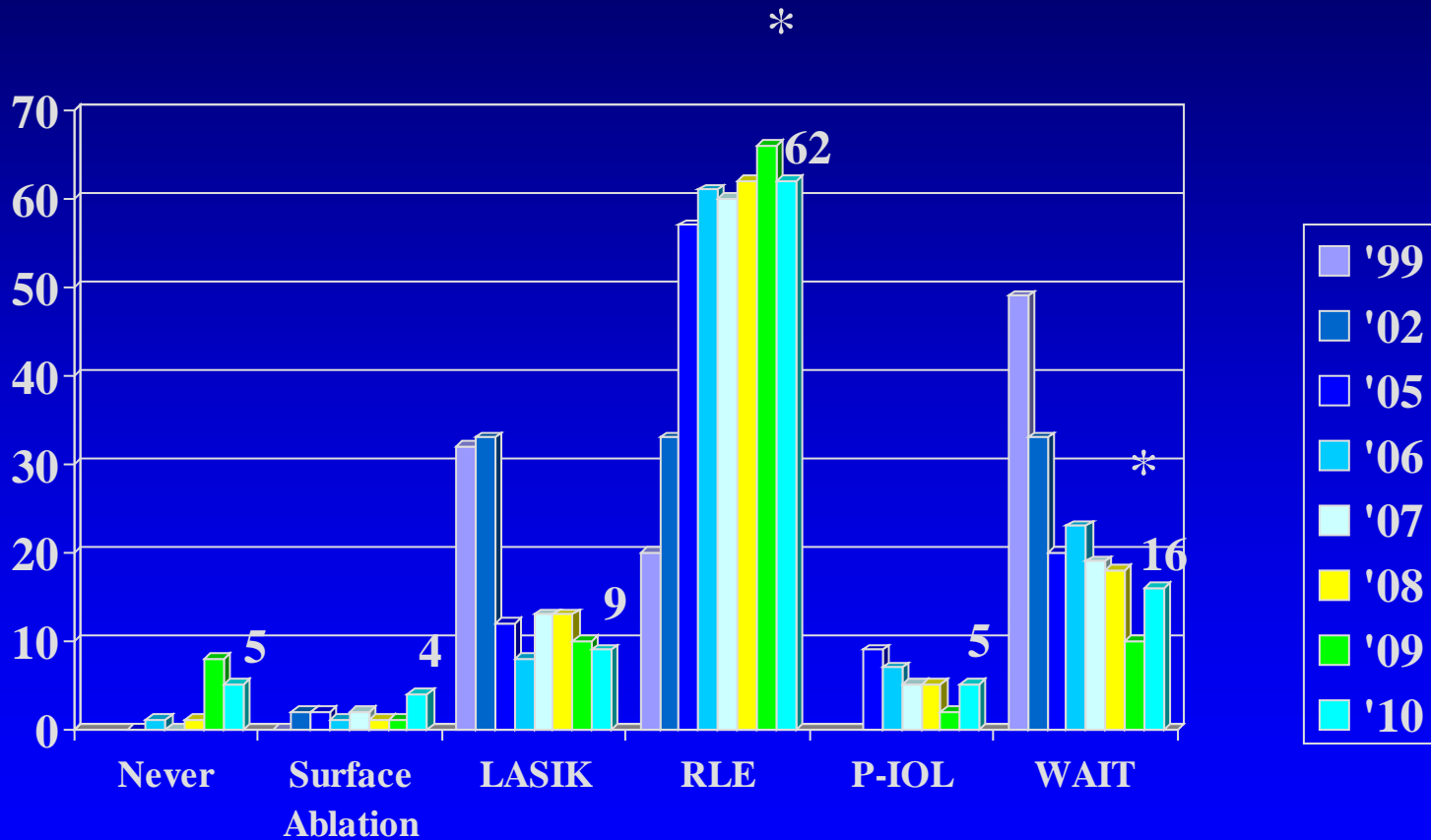


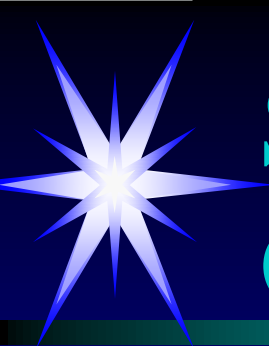
# Preferred Surgery For 45 yo +3.00 D Hyperope



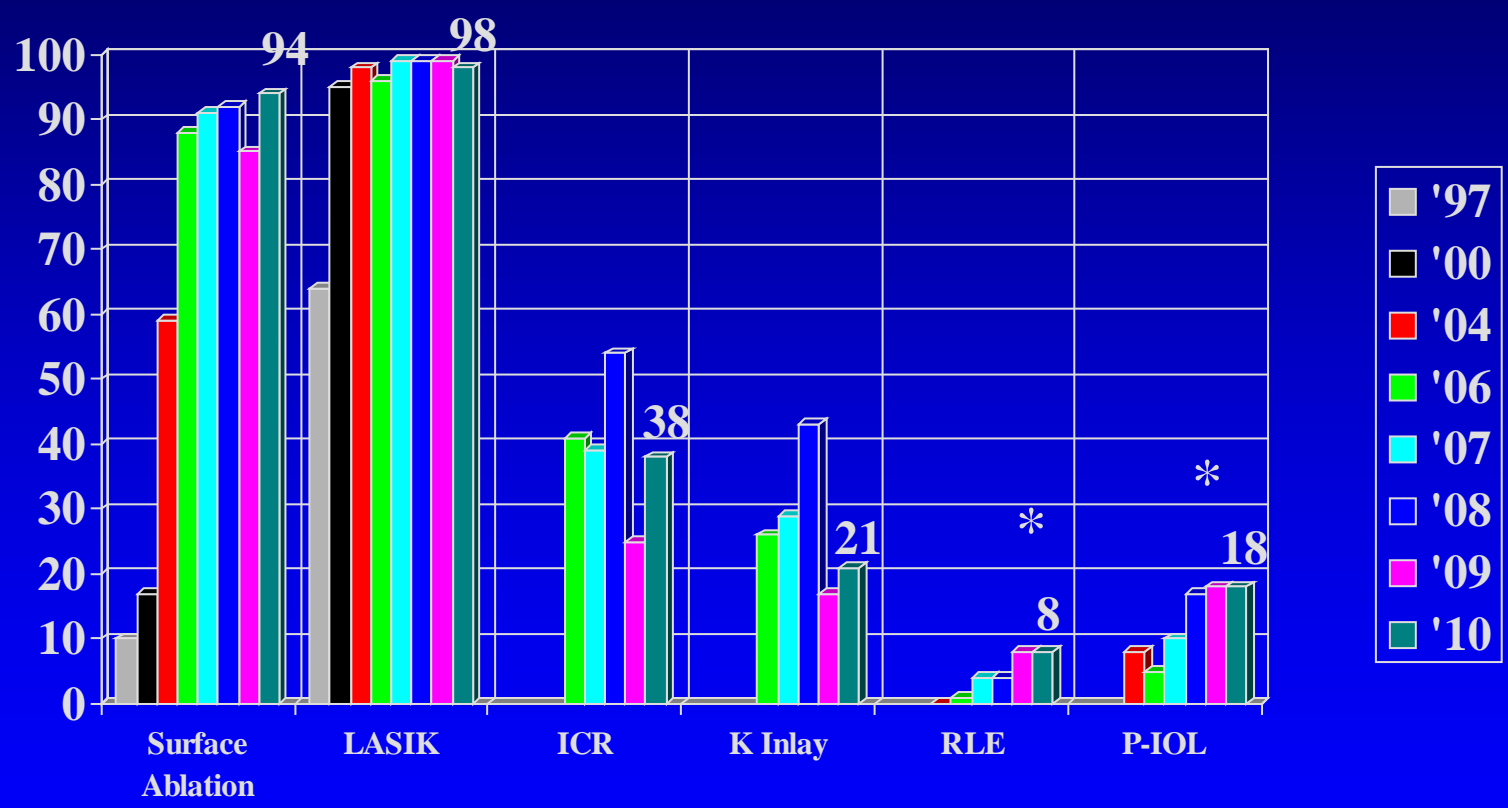


# Preferred Surgery For 45 yo +5.00 D Hyperope

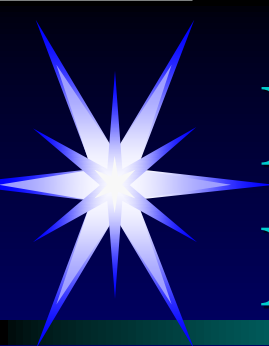




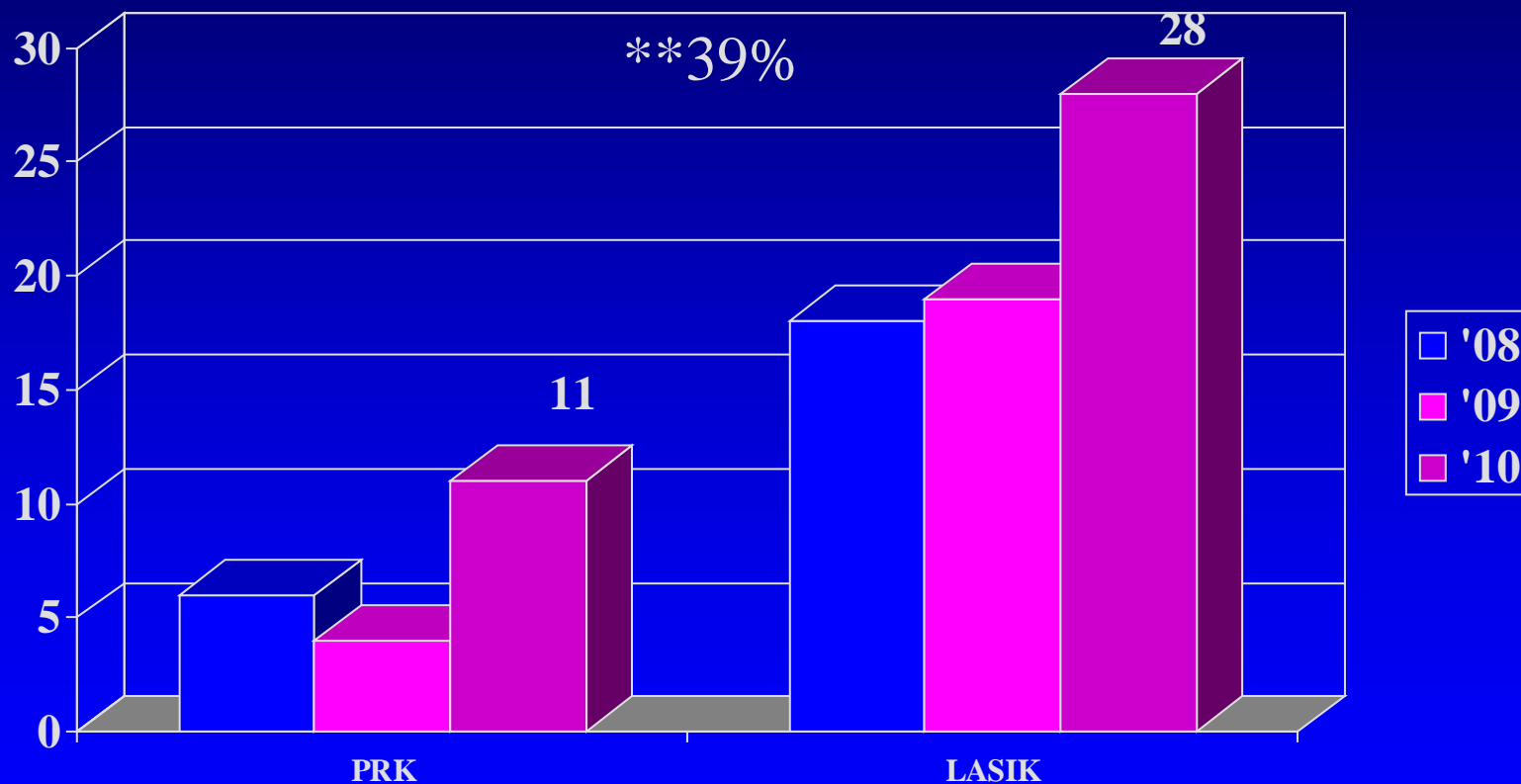
# Surgery Done Bilateral At Same O.R. Visit





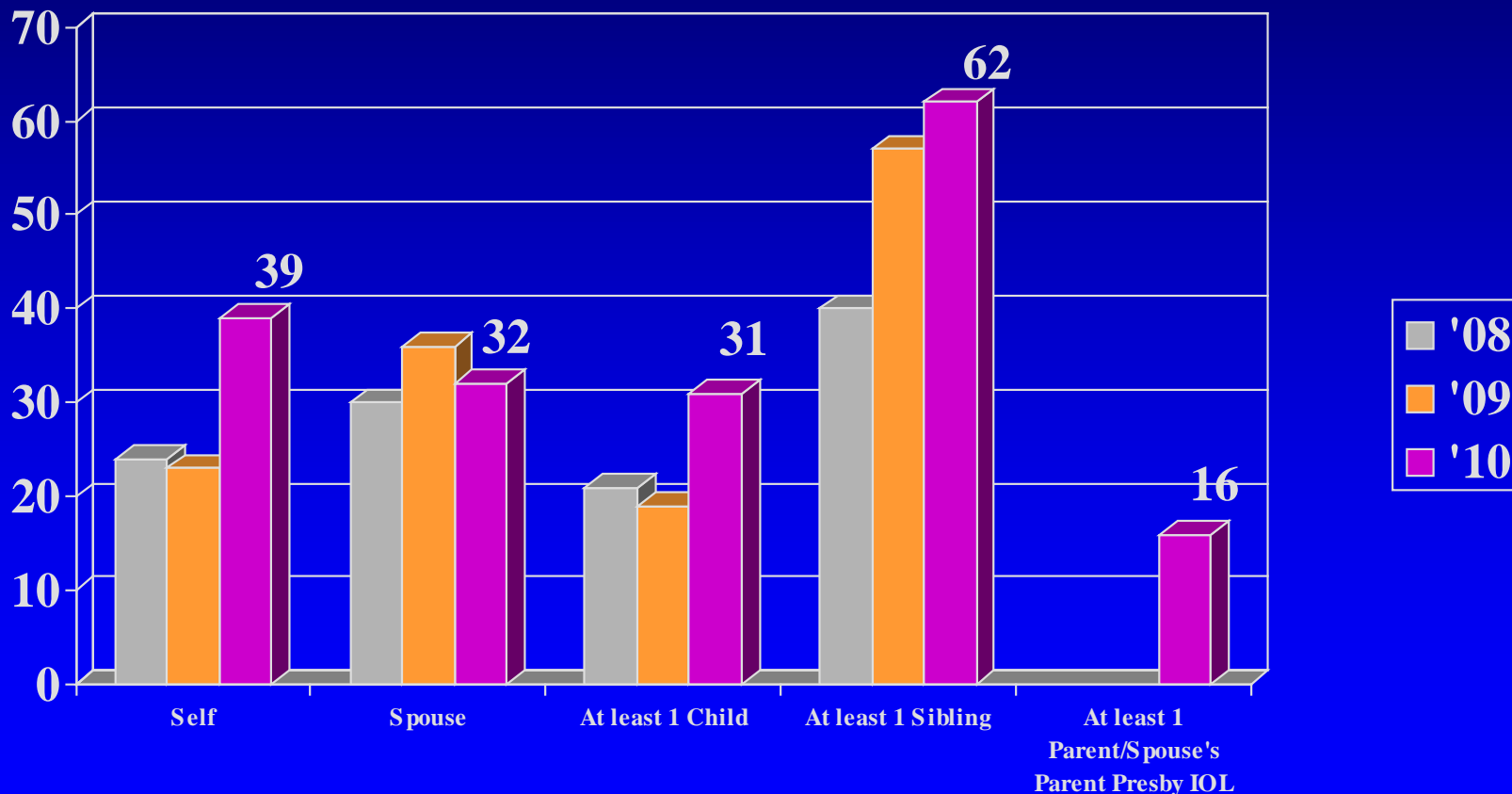


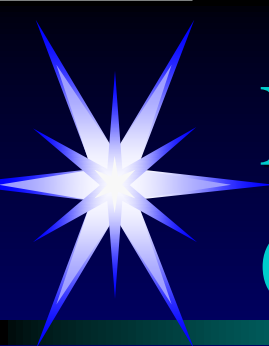
# Had Refractive Surgery Performed on Yourself



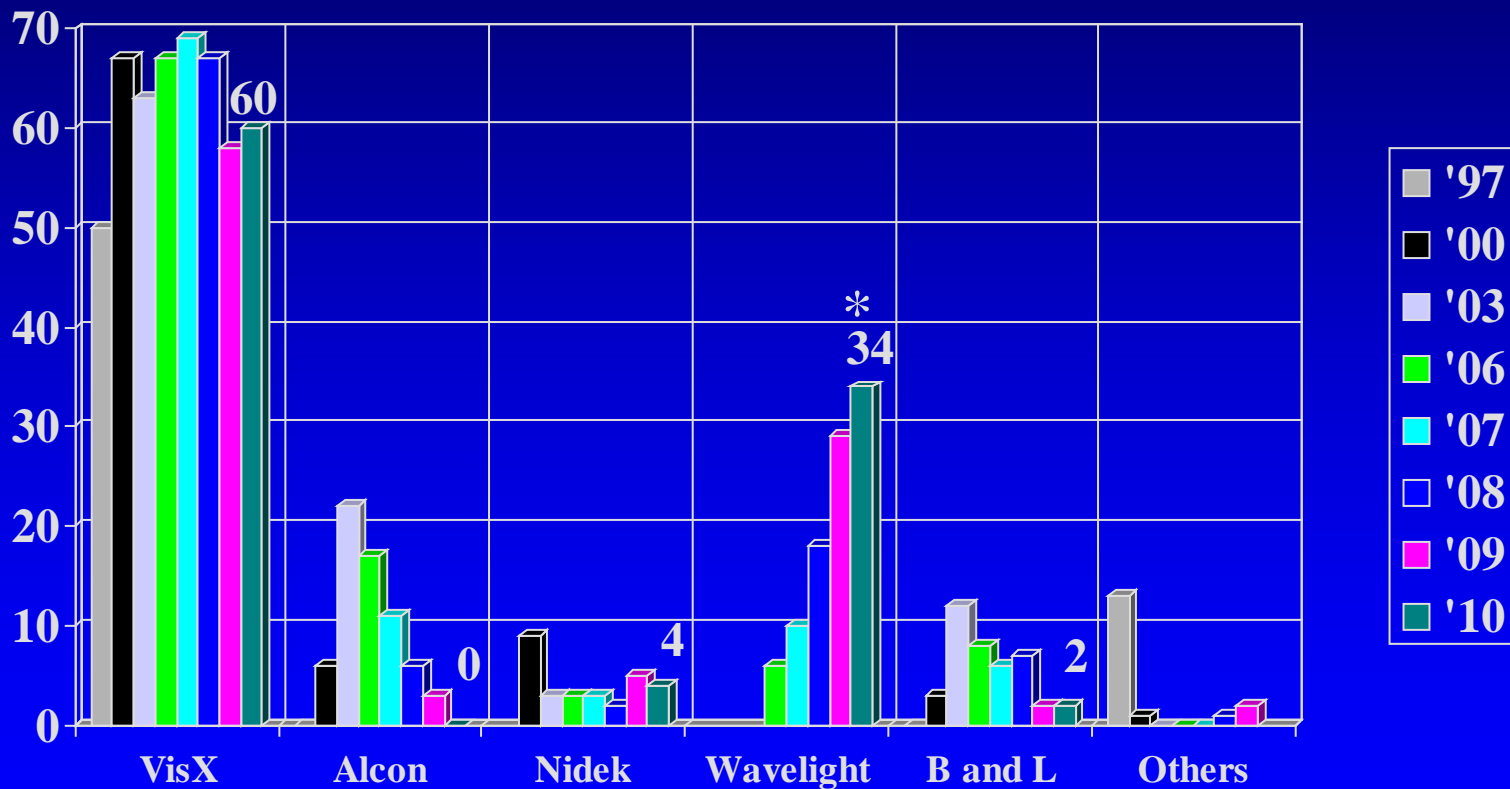


# Family LVC Index: (LASIK or PRK Performed on Our Own Family Member)



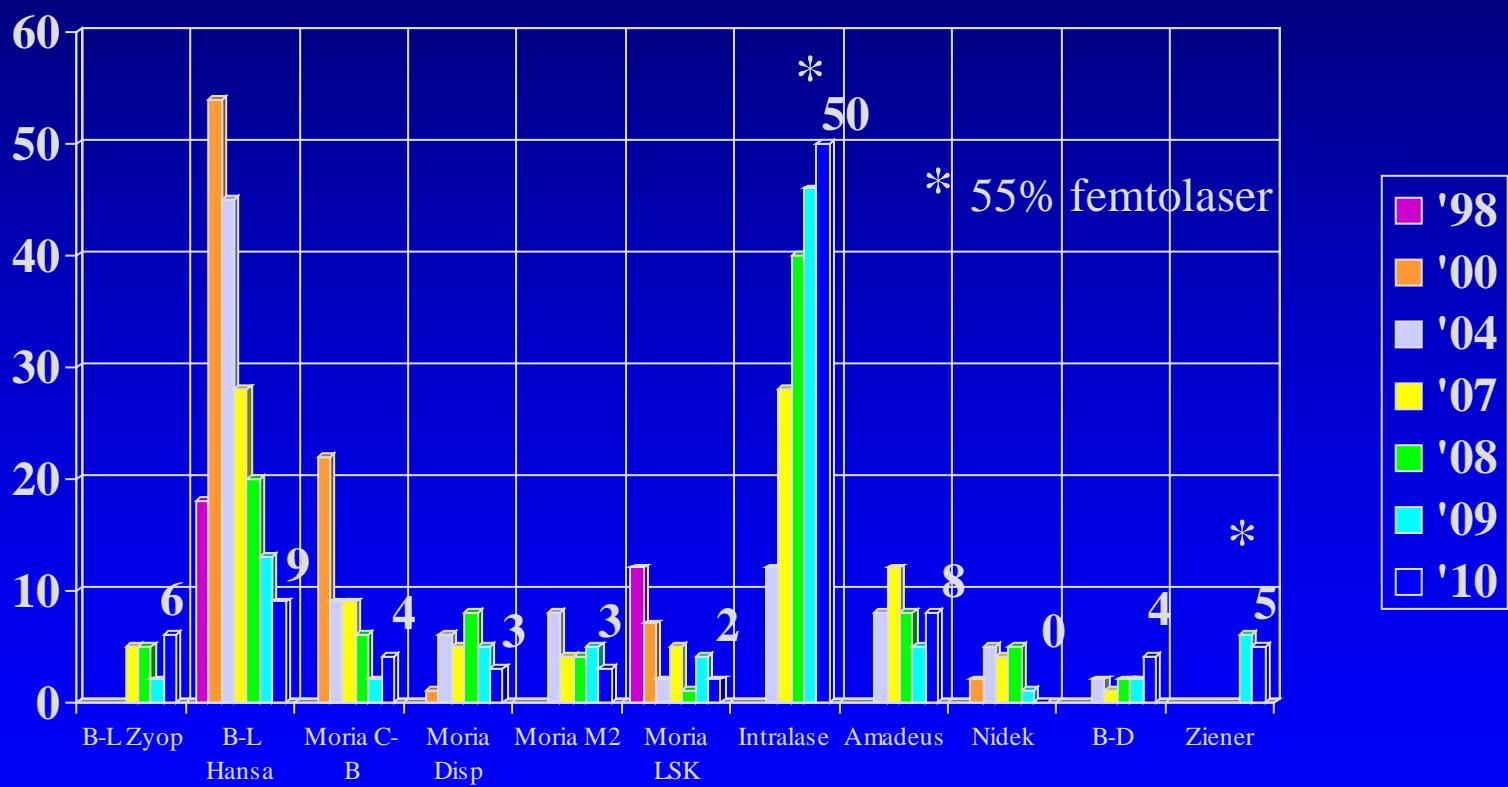


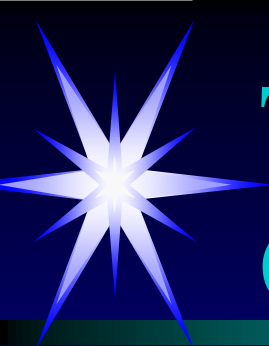
# Excimer Laser Most Commonly Used



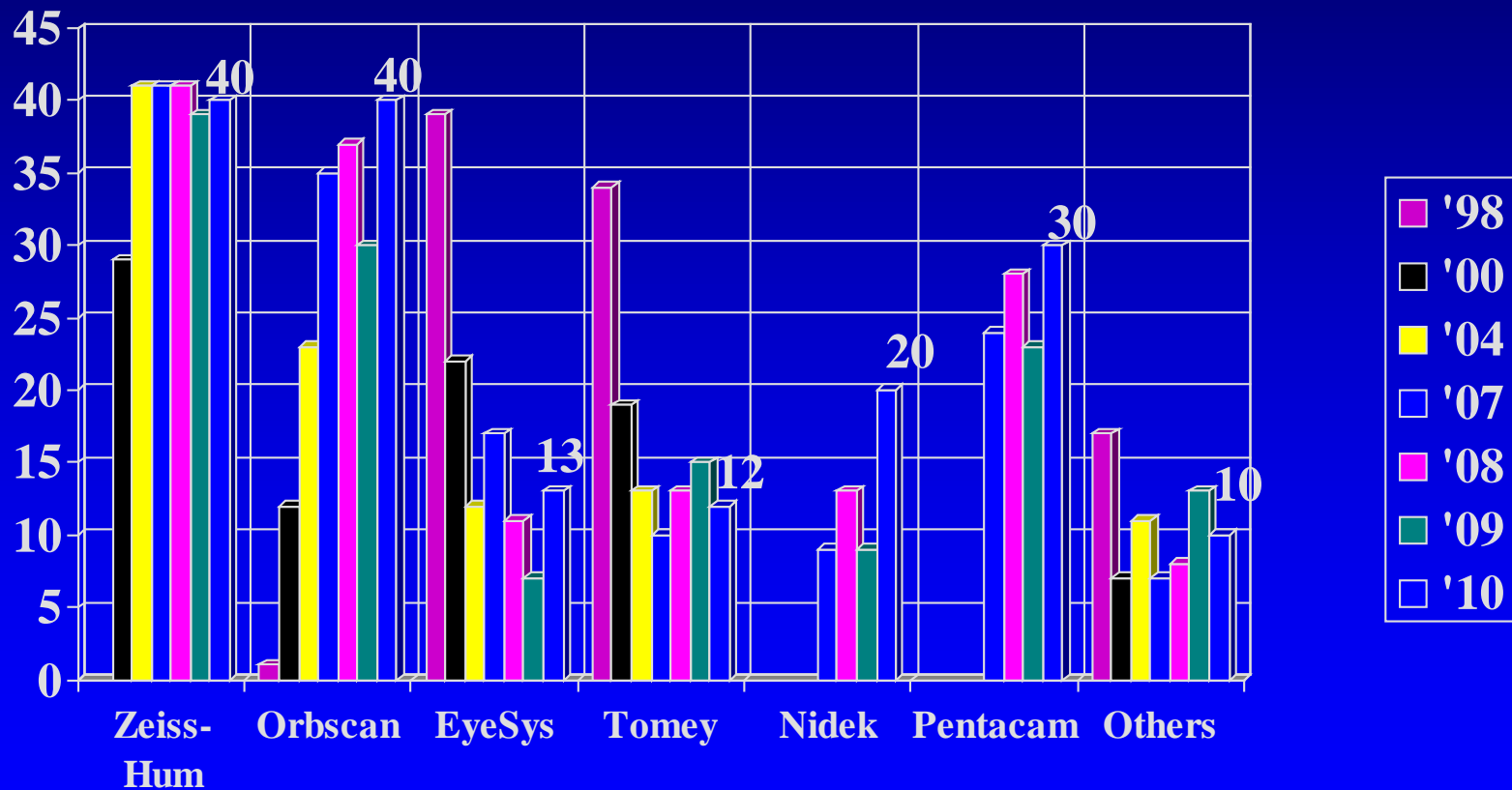


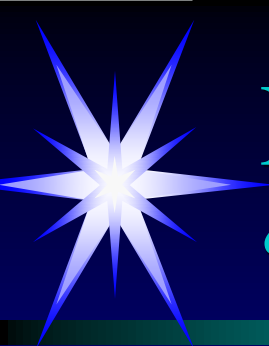
# “Microkeratome” Most Commonly Used



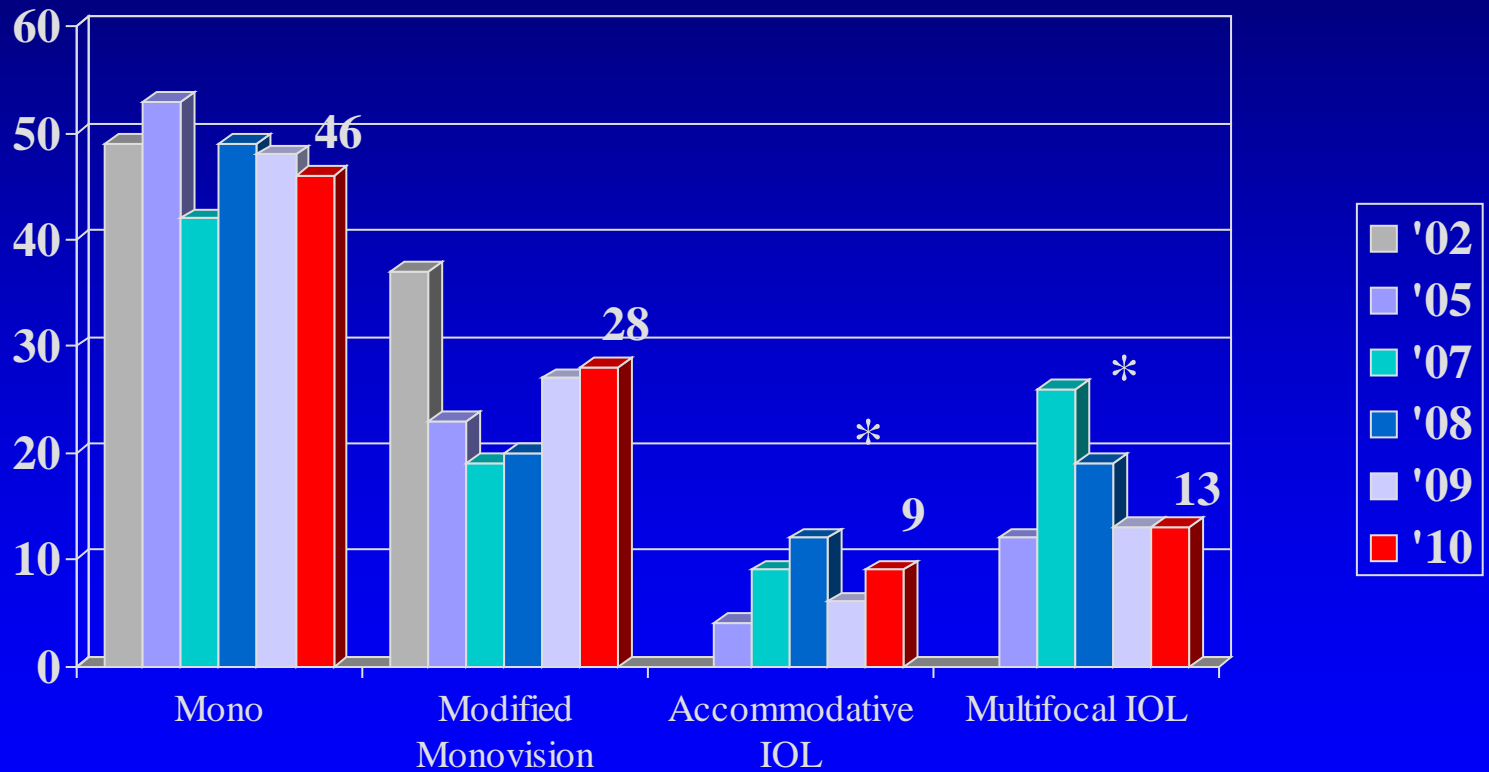


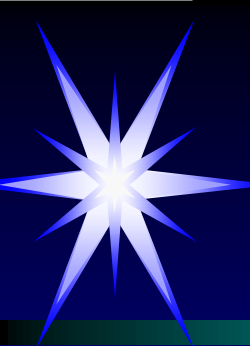
# Topography Unit Most Commonly Used



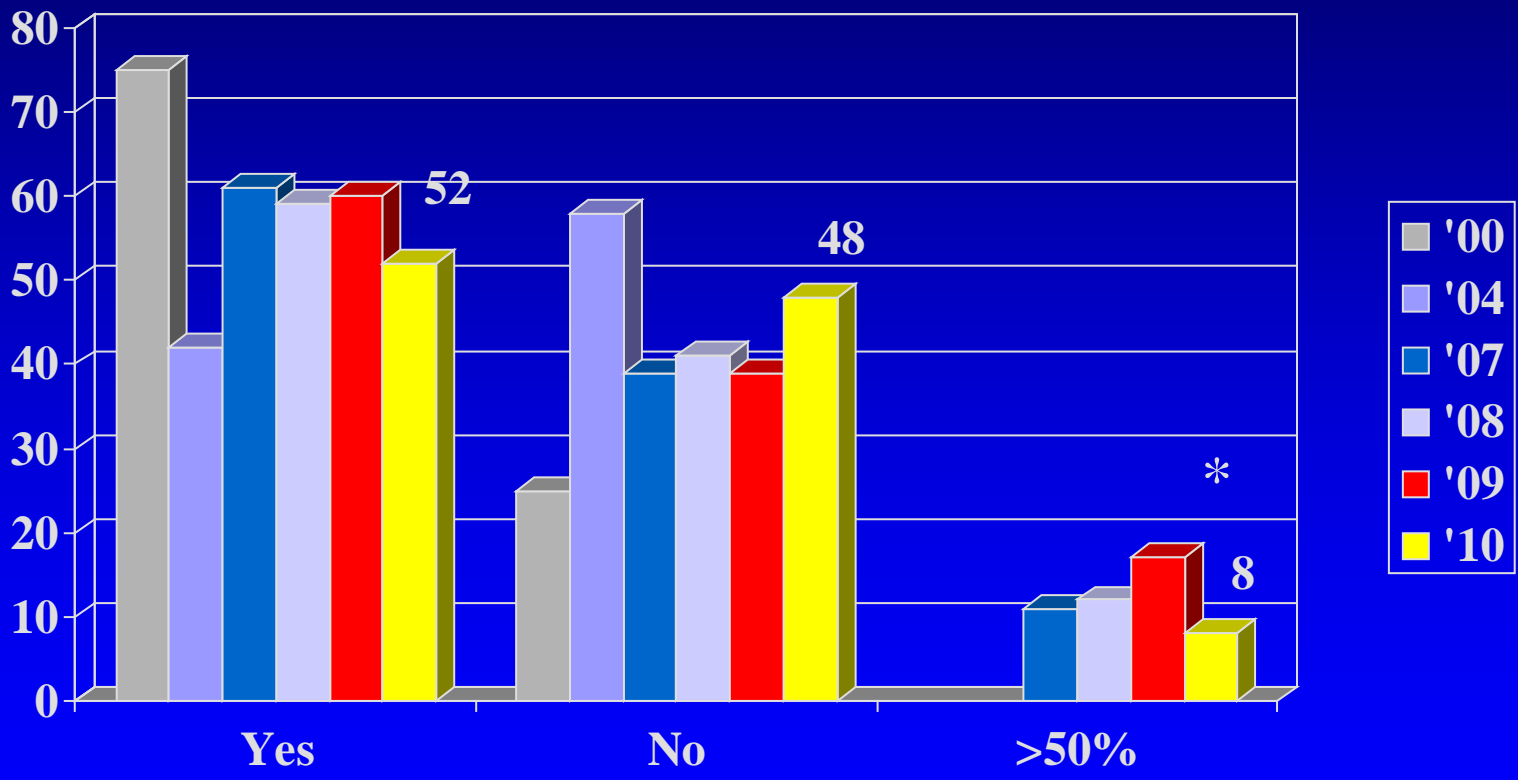


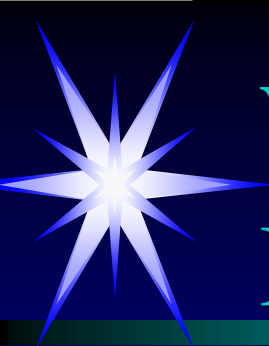
# Preferred Surgery for “Pre-Cataract” Presbyopia



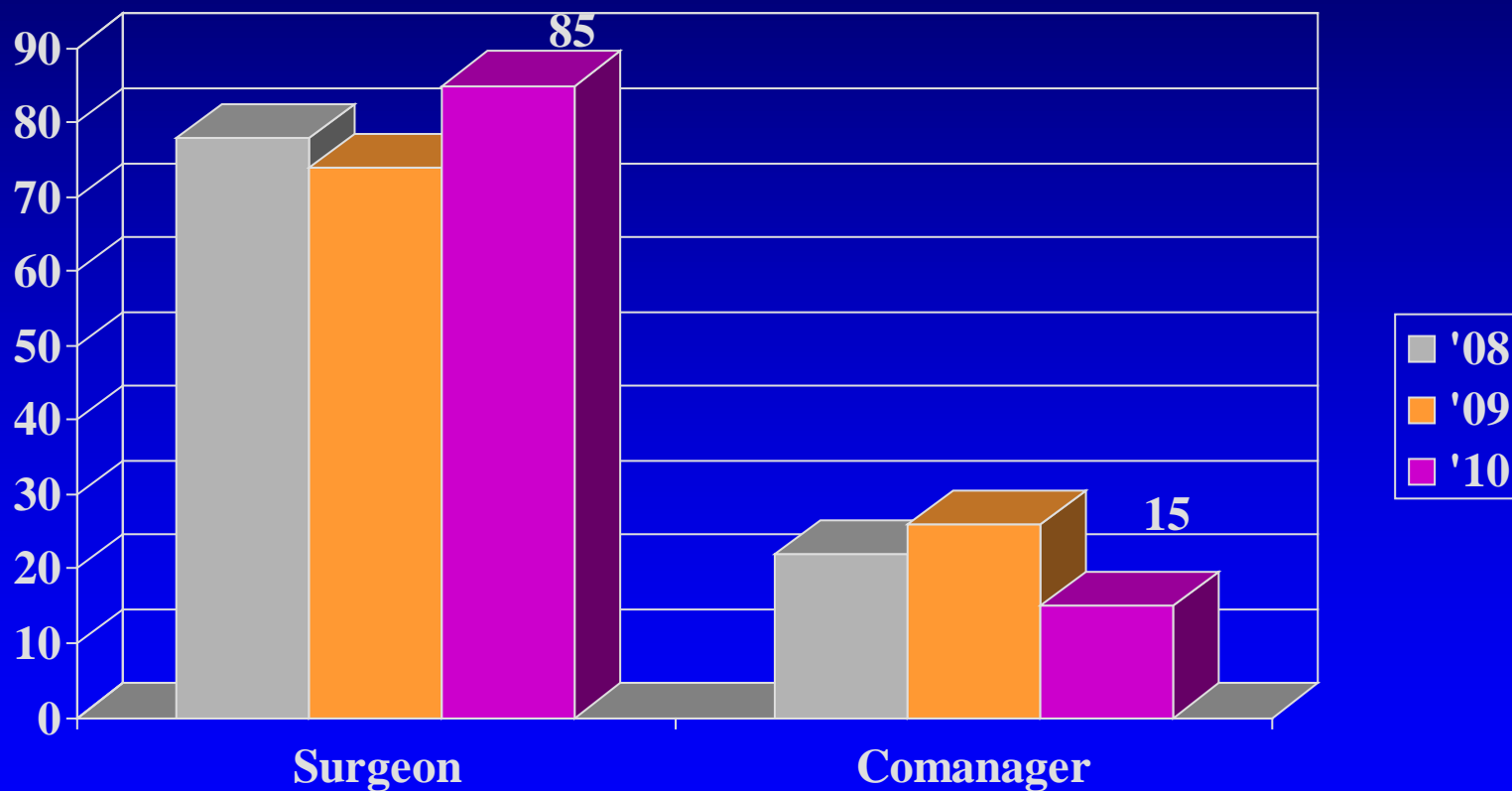


# Comanagement

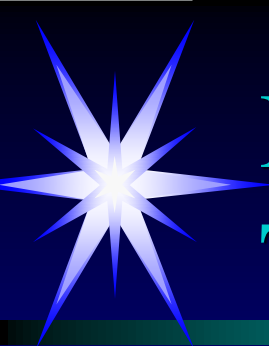




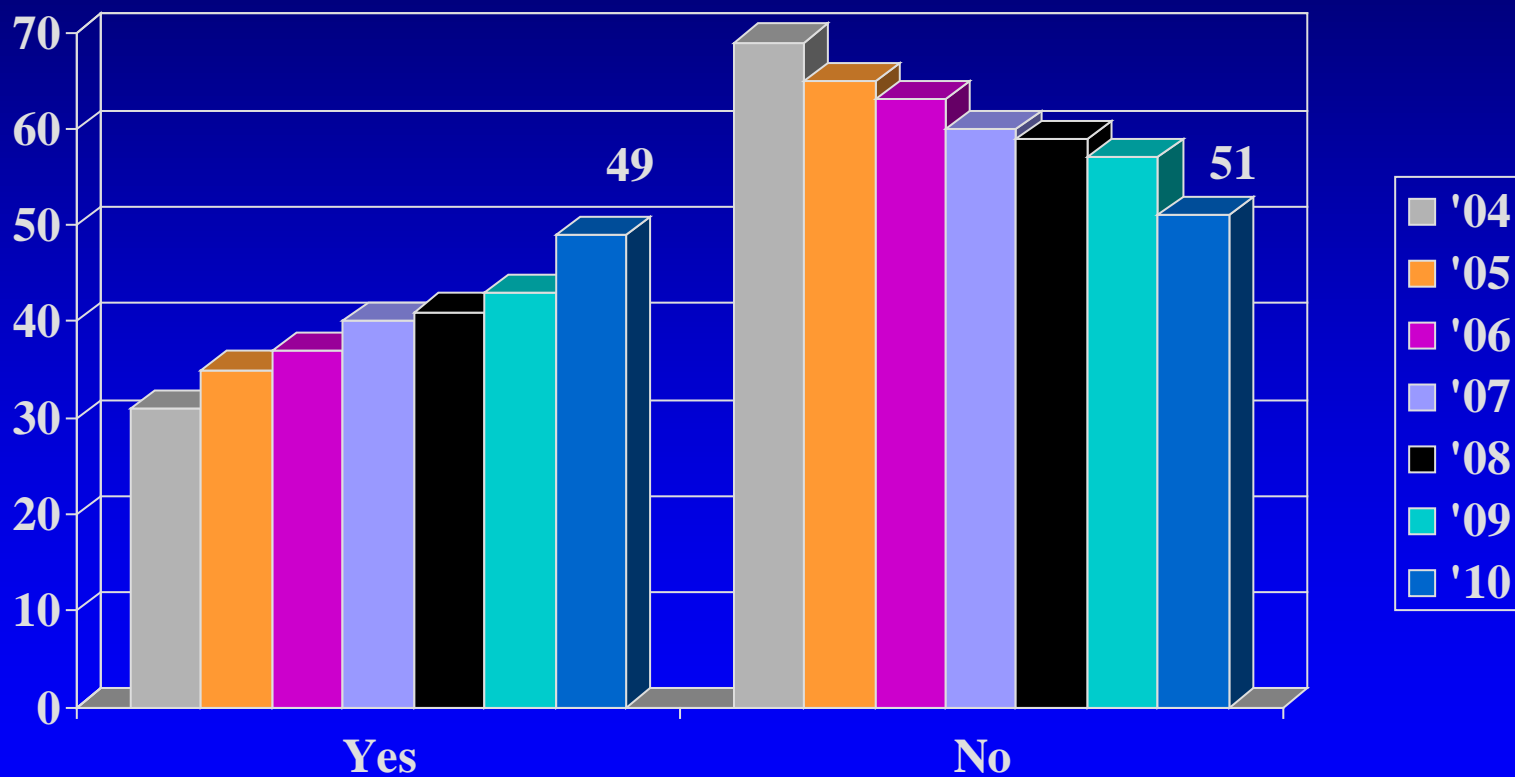
# When Comanaged, Who Does Day 1 Postop Exam?

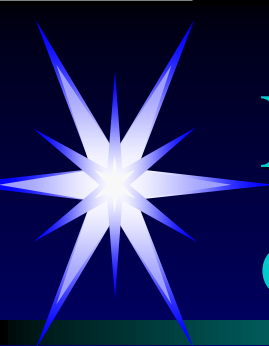




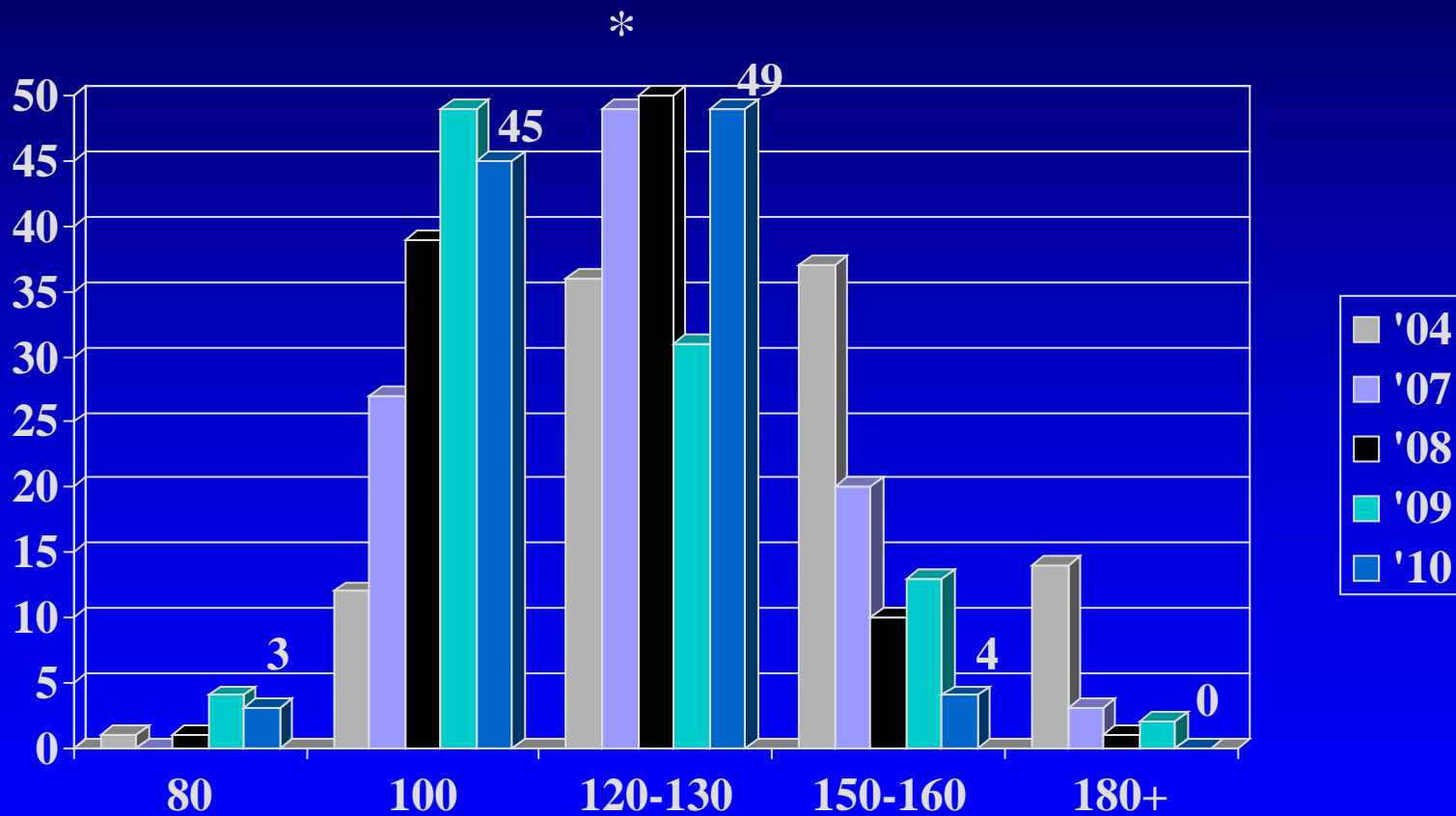


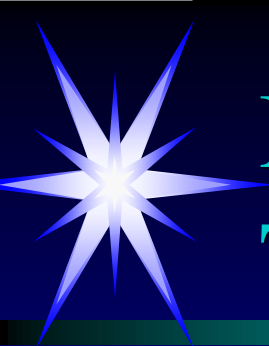
# Do You Routinely Measure Flap Thickness *Intra-operatively* ?



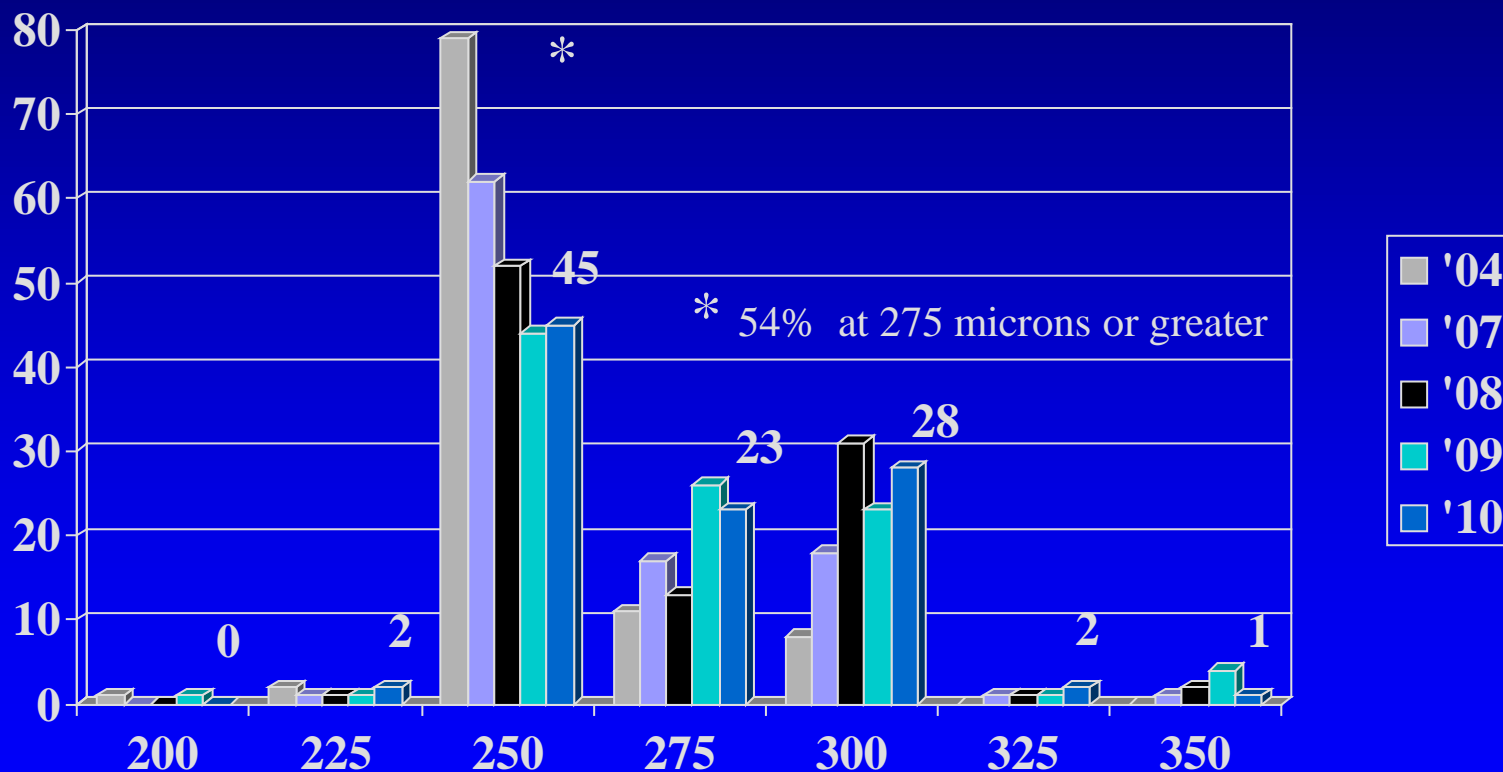


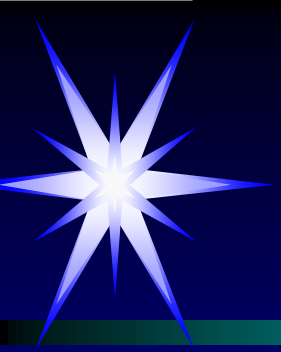
# Preferred Flap Thickness (when no other constraints)



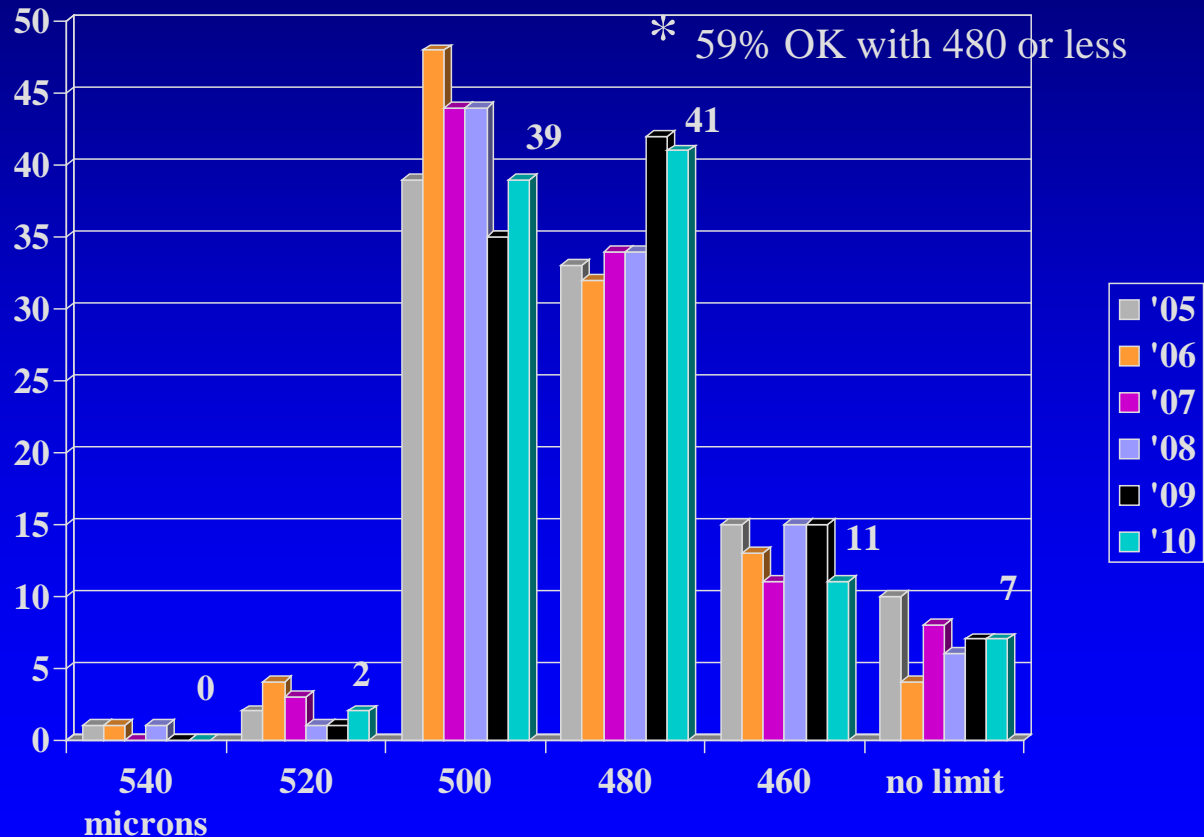


# Minimum Residual Stromal Bed Thickness Requirement for LASIK



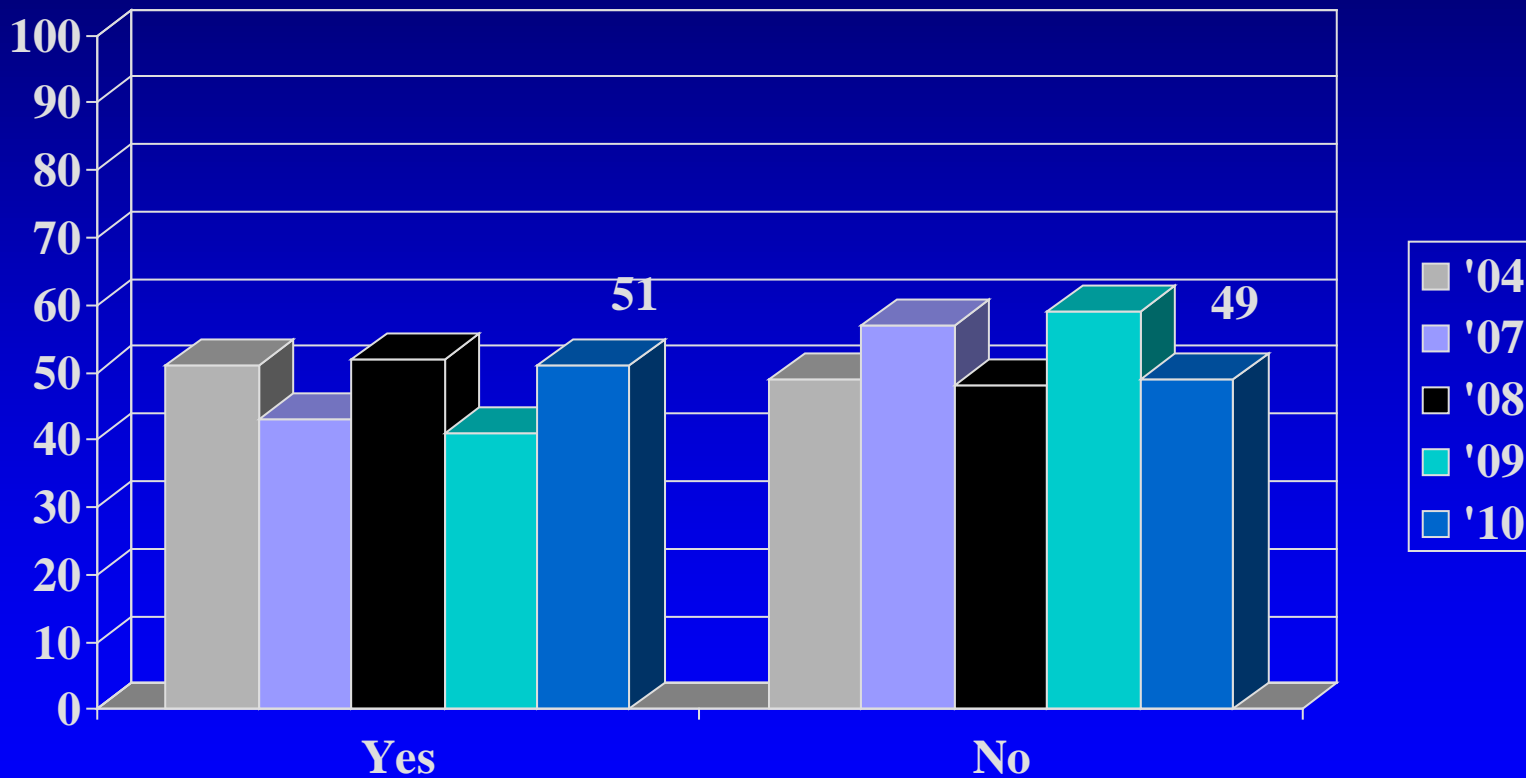


# Minimum Cent. Corneal Pachymetry for LASIK (all other parameters normal)



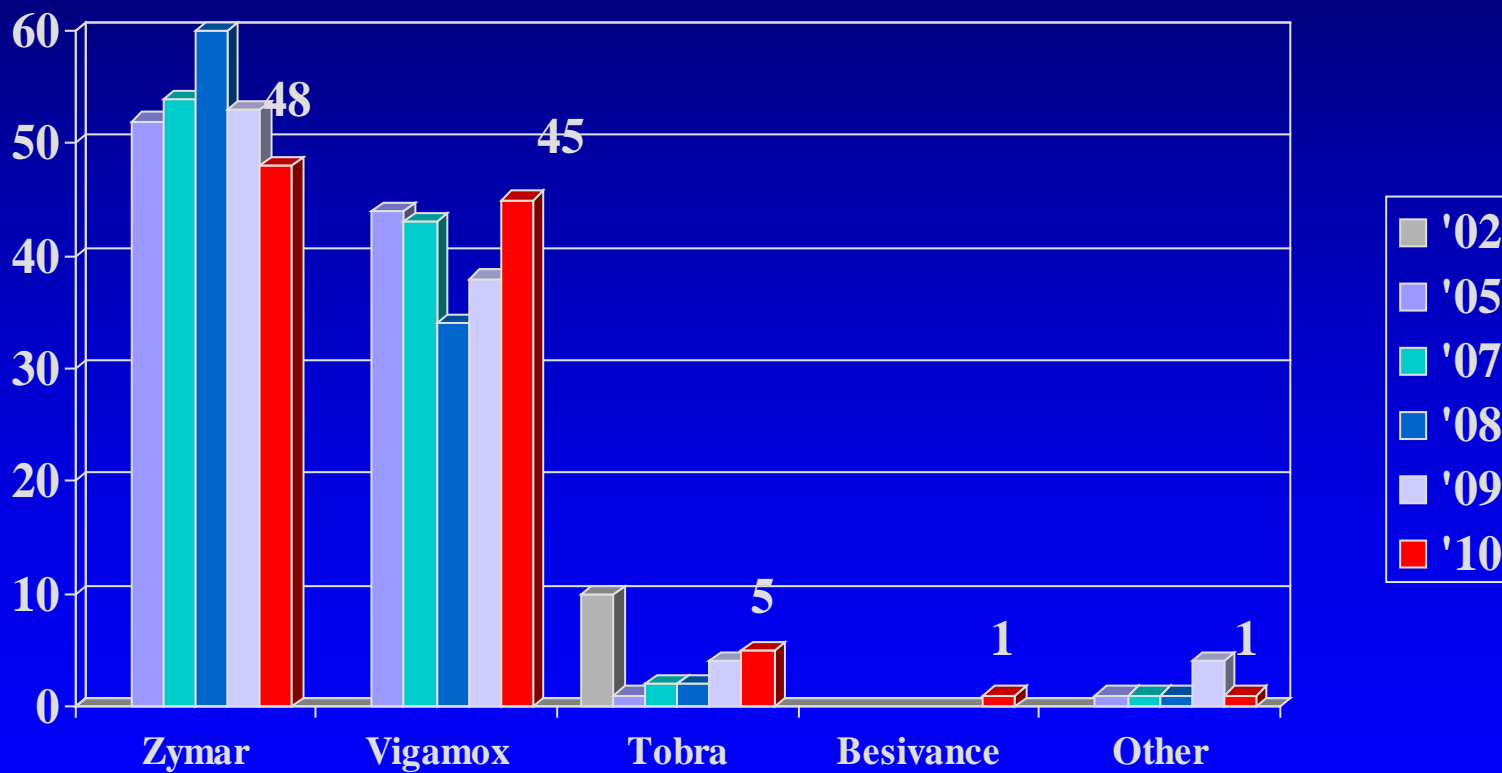


# Will You Perform Refractive Surgery on One-Eyed Patients



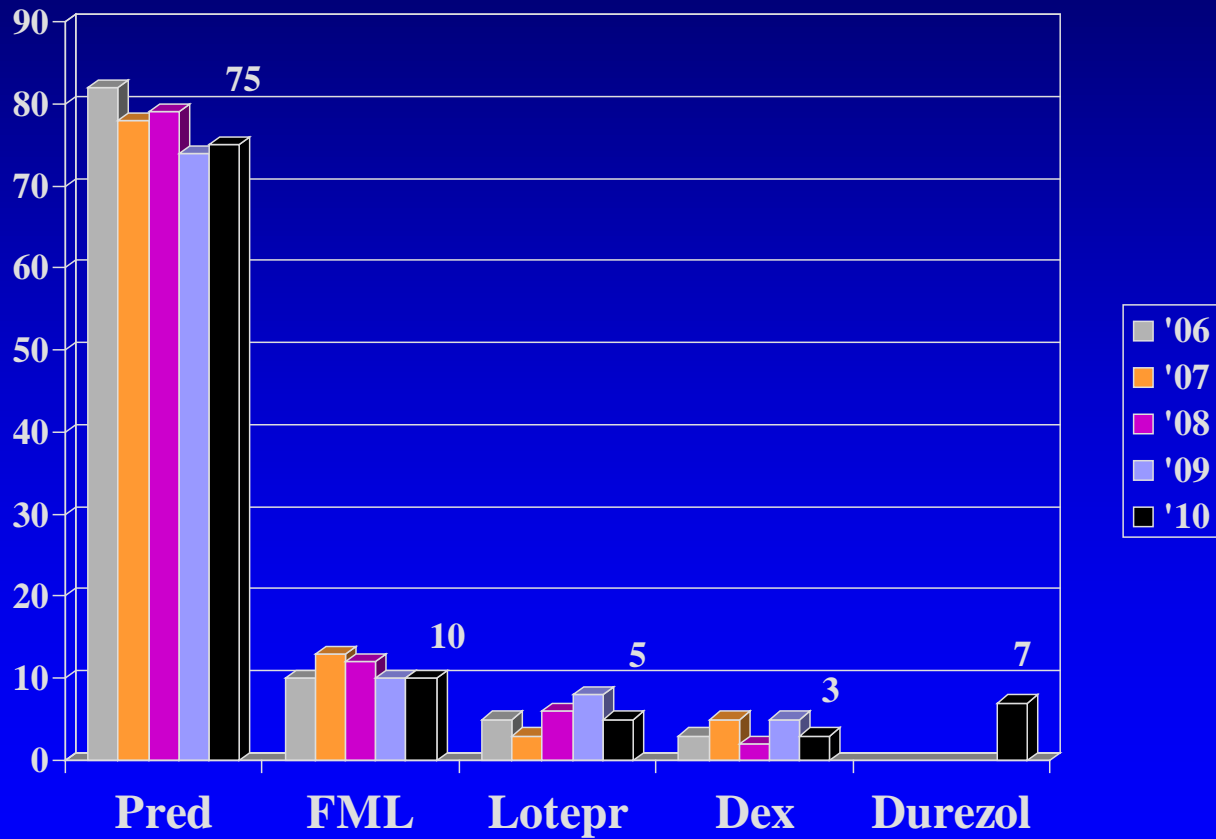


# Post-Op Antibiotic



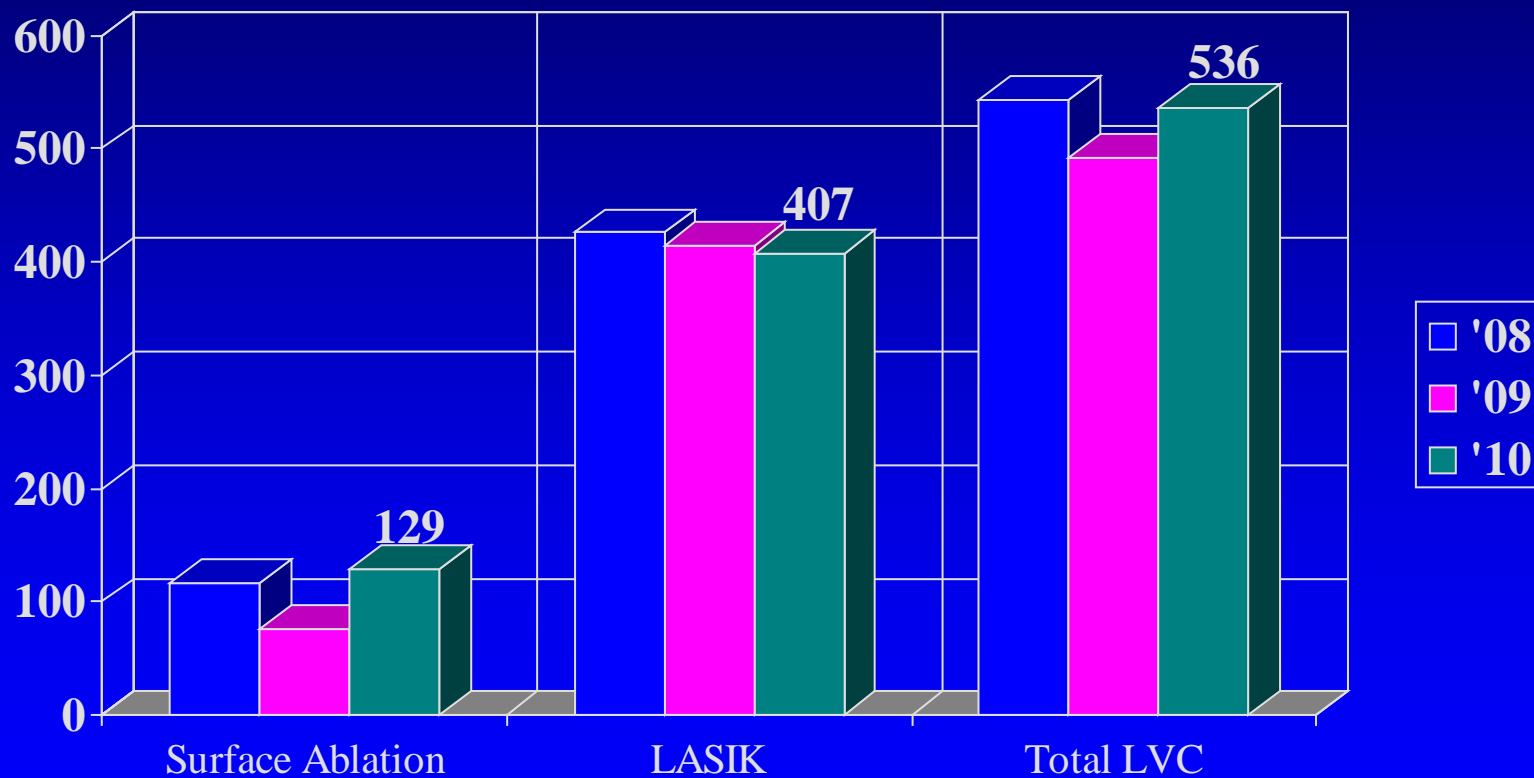


# Post-Op Steroid



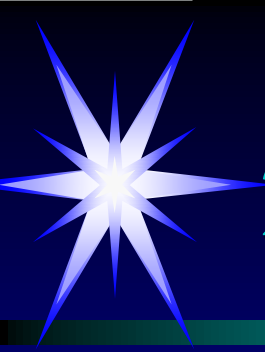


# Total LVC Volume within ISRS



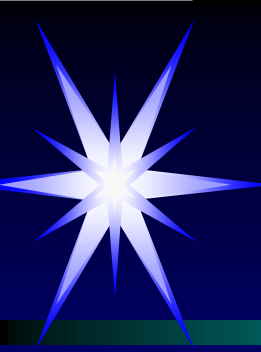
\* 9% increase in Total LVC from 2009.  
Ratio of PRK / Total LVC increased from 15% to 24% over past year.





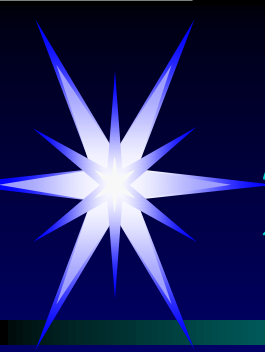
# 2010 ISRS SUMMARY

- Second ONLINE ISRS Survey was a success with 20% response rate
- LVC Volume up 9% within ISRS membership in 2010 relative to 2009.
- Ratio of Surface Ablation / Total LVC increased from 15% to 24% over past year.



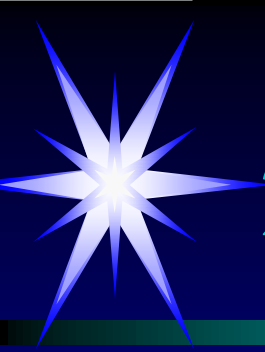
# 2009 ISRS SUMMARY

- VisX 2:1 (60%) over Wavelight (34%) which is on the rise
- About 39% penetration of modern refractive surgery amongst refractive surgeons; 4-5 times the general population. Family Index rates also continue to be high despite mixed bad press in the general public media.



# 2009 ISRS SUMMARY

- 18% of respondents are OK with bilateral P-IOL and 8% with bilateral RLE at the same surgical setting (unchanged).
- Multifocal IOL 13% over accommodative IOL 9% as a preferred lens-based presbyopia option when used for RLE.
- Femtosecond laser use on the rise (55%).



# 2009 ISRS SUMMARY

- Thinner flaps on the rise; 100 micron or less flaps are favored by 48% of surgeons (up from 12% in '04).
- RSB Thickness on the rise; 45% still think 250 microns is adequate, but 54% recommend 275 microns or more.
- New post-LASIK ectasia continue on the decline.



Additional Data at [www.duffeylaser.com](http://www.duffeylaser.com)

- Types and volumes of refractive surgeries currently being performed
- Preferred Epikeratomes
- Mitomycin-C use
- Post-operative use of antibiotics, steroids and nonsteroidals
- Surgical venues for various procedures



Thanks to the ISRS leadership for  
their support and for your  
participation in the 2010 Survey

We look forward to your response to  
our third ONLINE survey next fall

\*\*\*Complete 14 years of survey results  
found at [www.duffeylaser.com](http://www.duffeylaser.com)